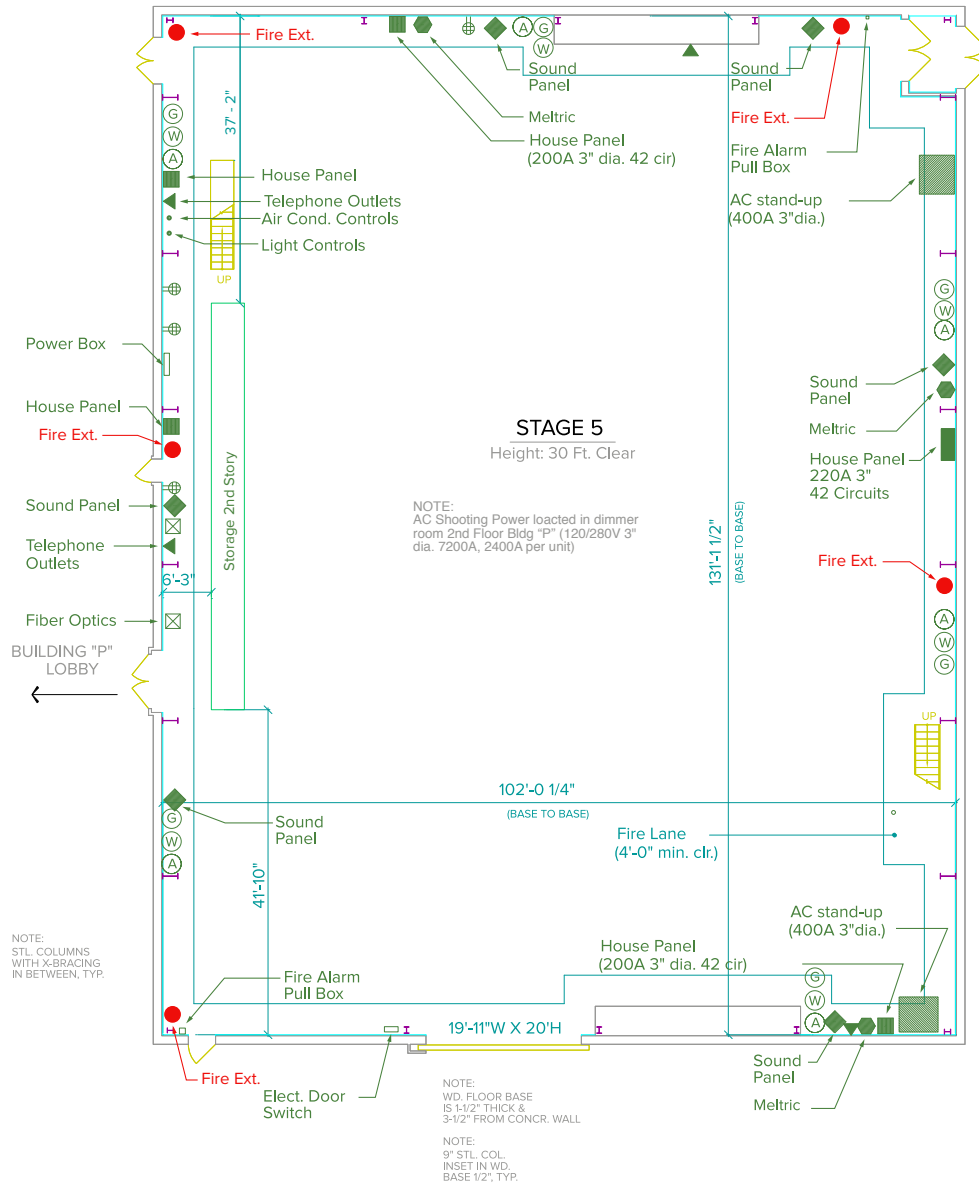




Stage 5
FLOORPLAN



SPECIFICATIONS

WIDTH	102'
LENGTH	131'
HEIGHT TO GRID	30'
TOTAL SQUARE FOOTAGE	13,362
ELEPHANT DOORS	East 16' x 15'
FLOOR TYPE	Wood Over Concrete
WEIGHT LIMIT	None

ELECTRIC SERVICES

UP TO 3 CANS OF SHOOT POWER – EACH CAN IS 2,400 AMP / 3 PHASE / 208 VOLTS	7,200 Amps Available
ADDITIONAL POWER AVAILABLE	(2) 400 Amp / 3 Phase / 208v Shoot Cans
90A 3PH MELTRIC POWER OUTLETS (208V)	3
HOUSE POWER / 20A RECEPTACLES (120V SINGLE PHASE)	22

SUPPORT SPACE

DRESSING ROOMS / WARDROBE, HAIR & MAKEUP ROOMS AVAILABLE IN ADJACENT BUILDINGS

HVAC

REDLIGHT & BELL SYSTEM	Available
VENTILATION	No Exhaust Fans Available
HEATING	Built into Silent Air
SILENT AIR	A/C & Heat – 80 ton built-in cooling unit

EXTRAS

TRAILER HOOKUPS	Available
GAS CONNECTIONS	Available
COMPRESSED AIR	Available
WIRELESS INTERNET	Available
HAZMAT SERVICES	Available Upon Request
PORTABLE DRESSING ROOMS	Available Upon Request